

//ALL STAINLESS STEEL SENSORS

STAINLESS STEEL V2A / V4A SENSORS

Our inductive sensors made of stainless steel provide an optimal solution for use in environments with higher requirements on the housing material. Variants for the Food & Beverage area (316L) are also available.

/// IS 208



V2A sensor for extreme environmental conditions and material-independent switching distance (reduction factor 1).



Benefits:

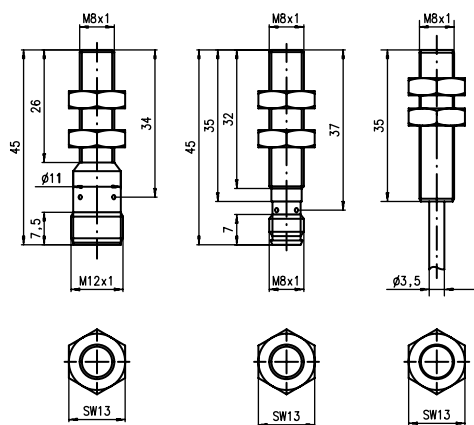
- Sturdy all-metal housing for high, permanent machine availability
- Housing of stainless steel V2A with degrees of protection IP 68 and IP 69K
- Switching distance independent of object property (reduction factor 1)



Direct access to the online product selector at www.leuze.com/en/is208

Part no.	Part description	Operating range Sa Typ. operating range limit Sn	Switching frequency	Type of installation	Switching output 1	Description	Connection	Material
50128179	IS 208FM/4NC.5-2E0-S8.3	0 ... 1.6 mm 2 mm	100 Hz	Embedded	Transistor, PNP, break-contact (NC)	Reduction factor 1, DC	Connector, M8, 3-pin	Stainless steel
50128180	IS 208FM/4NC.5-2E0	0 ... 1.6 mm 2 mm	100 Hz	Embedded	Transistor, PNP, break-contact (NC)	Reduction factor 1, DC	Cable, 2,000 mm, 3-wire	Stainless steel
50128181	IS 208FM/4NO.5-2E0-S8.3	0 ... 1.6 mm 2 mm	100 Hz	Embedded	Transistor, PNP, make-contact (NO)	Reduction factor 1, DC	Connector, M8, 3-pin	Stainless steel
50128182	IS 208FM/4NO.5-2E0	0 ... 1.6 mm 2 mm	100 Hz	Embedded	Transistor, PNP, make-contact (NO)	Reduction factor 1, DC	Cable, 2,000 mm, 3-wire	Stainless steel
50128183	IS 208FM/2NO.5-2E0-S8.3	0 ... 1.6 mm 2 mm	100 Hz	Embedded	Transistor, NPN, make-contact (NO)	Reduction factor 1, DC	Connector, M8, 3-pin	Stainless steel
50128184	IS 208FM/2NO.5-2E0	0 ... 1.6 mm 2 mm	100 Hz	Embedded	Transistor, NPN, make-contact (NO)	Reduction factor 1, DC	Cable, 2,000 mm, 3-wire	Stainless steel

Dimensioned drawings: IS 208



IS 208 ... E... series

/// IS 212



With their robust housing made of stainless steel, these sensors withstand even aggressive cleaning processes encountered in food and pharmaceutical production.

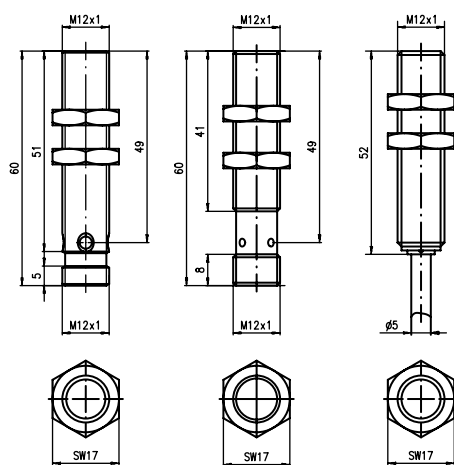
**Benefits:**

- Sturdy stainless steel housing for high, permanent machine availability
- Housing of stainless steel 316L with degree of protection IP 69K for food & beverage applications as well as V2A housing material with degree of protection IP 68/ IP 69K
- Large ranges on stainless steel objects for reliable detection of machine parts, e.g. on packaging machinery in the foodstuffs sector
- Switching distance independent of object property (reduction factor 1)

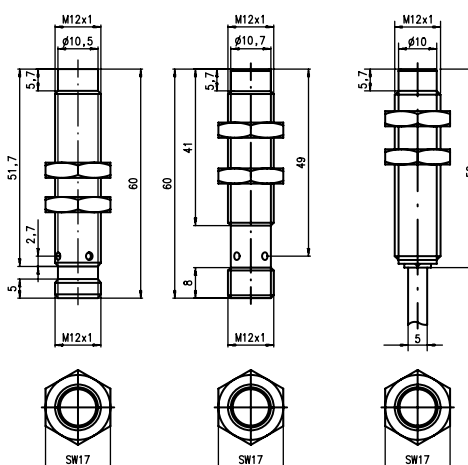


Direct access to the online product selector at www.leuze.com/en/is212

Part no.	Part description	Operating range Sa Typ. operating range limit Sn	Switching frequency	Type of installation	Switching output 1	Description	Connection	Material
50109738	IS 212FM/4N0.5F-10N-S12	0 ... 8.1 mm 10 mm	400 Hz	Non-embedded	Transistor, PNP, make-contact (NO)	Reduction factor 1, DC	Connector, M12, 4-pin	Stainless steel
50109736	IS 212FM/4N0.5F-6E0-S12	0 ... 4.8 mm 6 mm	600 Hz	Embedded	Transistor, PNP, make-contact (NO)	Reduction factor 1, DC	Connector, M12, 4-pin	Stainless steel
50117127	IS 212FM/4N0.5W-6E0-S12	0 ... 4.8 mm 6 mm	15 Hz	Embedded	Transistor, PNP, make-contact (NO)	Resistant against welding sparks, DC	Connector, M12, 4-pin	Stainless steel
50128173	IS 212FM/4NC.5-3E0-S12	0 ... 2.4 mm 3 mm	100 Hz	Embedded	Transistor, PNP, break-contact (NC)	Reduction factor 1, DC	Connector, M12, 4-pin	Stainless steel
50128174	IS 212FM/4NC.5-3E0	0 ... 2.4 mm 3 mm	100 Hz	Embedded	Transistor, PNP, break-contact (NC)	Reduction factor 1, DC	Cable, 2,000 mm, 3-wire	Stainless steel
50128175	IS 212FM/4N0.5-3E0-S12	0 ... 2.4 mm 3 mm	100 Hz	Embedded	Transistor, PNP, make-contact (NO)	Reduction factor 1, DC	Connector, M12, 4-pin	Stainless steel
50128176	IS 212FM/4N0.5-3E0	0 ... 2.4 mm 3 mm	100 Hz	Embedded	Transistor, PNP, make-contact (NO)	Reduction factor 1, DC	Cable, 2,000 mm, 3-wire	Stainless steel
50128177	IS 212FM/2N0.5-3E0-S12	0 ... 2.4 mm 3 mm	100 Hz	Embedded	Transistor, NPN, make-contact (NO)	Reduction factor 1, DC	Connector, M12, 4-pin	Stainless steel
50128178	IS 212FM/2N0.5-3E0	0 ... 2.4 mm 3 mm	100 Hz	Embedded	Transistor, NPN, make-contact (NO)	Reduction factor 1, DC	Cable, 2,000 mm, 3-wire	Stainless steel

Dimensioned drawings: IS 212

IS 212 ... E ... series



IS 212 ... N ... series

/// IS 218



Like the IS 212 series, these sensors are likewise robust with V4A housing and, in addition, offer a larger switching distance.

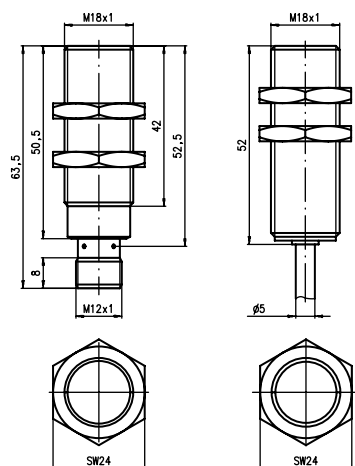
**Benefits:**

- Sturdy all-metal housing for high, permanent machine availability
- Housing of stainless steel 316L with degree of protection IP 69K for food & beverage applications as well as V2A housing material with degree of protection IP 68/ IP 69K
- Large ranges on stainless steel objects for reliable detection of machine parts, e. g. on packaging machinery in the foodstuffs sector
- Switching distance independent of object property (reduction factor 1)

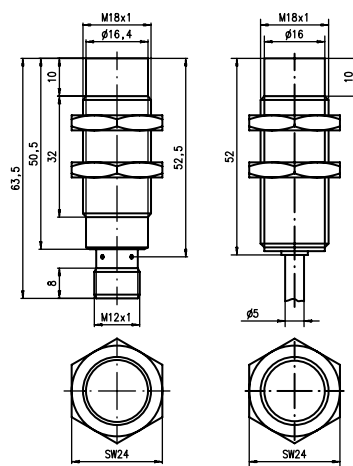


Direct access to the online product selector at www.leuze.com/en/is218

Part no.	Part description	Operating range Sa Typ. operating range limit Sn	Switching frequency	Type of installation	Switching output 1	Description	Connection	Material
50109734	IS 218FM/4NO.5F-20N-S12	0 ... 16.2 mm 20 mm	200 Hz	Non-embedded	Transistor, PNP, make-contact (NO)	Reduction factor 1, DC	Connector, M12, 4-pin	Stainless steel
50109732	IS 218FM/4NO.5F-10E-S12	0 ... 8.1 mm 10 mm	300 Hz	Embedded	Transistor, PNP, make-contact (NO)	Reduction factor 1, DC	Connector, M12, 4-pin	Stainless steel
50128167	IS 218FM/4NC.5-5E0-S12	0 ... 4 mm 5 mm	100 Hz	Embedded	Transistor, PNP, break-contact (NC)	Reduction factor 1, DC	Connector, M12, 4-pin	Stainless steel
50128168	IS 218FM/4NC.5-5E0	0 ... 4 mm 5 mm	100 Hz	Embedded	Transistor, PNP, break-contact (NC)	Reduction factor 1, DC	Cable, 2,000 mm, 3-wire	Stainless steel
50128169	IS 218FM/4NO.5-5E0-S12	0 ... 4 mm 5 mm	100 Hz	Embedded	Transistor, PNP, make-contact (NO)	Reduction factor 1, DC	Connector, M12, 4-pin	Stainless steel
50128170	IS 218FM/4NO.5-5E0	0 ... 4 mm 5 mm	100 Hz	Embedded	Transistor, PNP, make-contact (NO)	Reduction factor 1, DC	Cable, 2,000 mm, 3-wire	Stainless steel
50128171	IS 218FM/2NO.5-5E0-S12	0 ... 4 mm 5 mm	100 Hz	Embedded	Transistor, NPN, make-contact (NO)	Reduction factor 1, DC	Connector, M12, 4-pin	Stainless steel
50128172	IS 218FM/2NO.5-5E0	0 ... 4 mm 5 mm	100 Hz	Embedded	Transistor, NPN, make-contact (NO)	Reduction factor 1, DC	Cable, 2,000 mm, 3-wire	Stainless steel

Dimensioned drawings: IS 218

IS 218...E... series



IS 218...N... series

/// IS 230



With a switching distance of up to 40 mm, this series in the M30 stainless steel design offers the greatest possible flexibility during mounting.

**Benefits:**

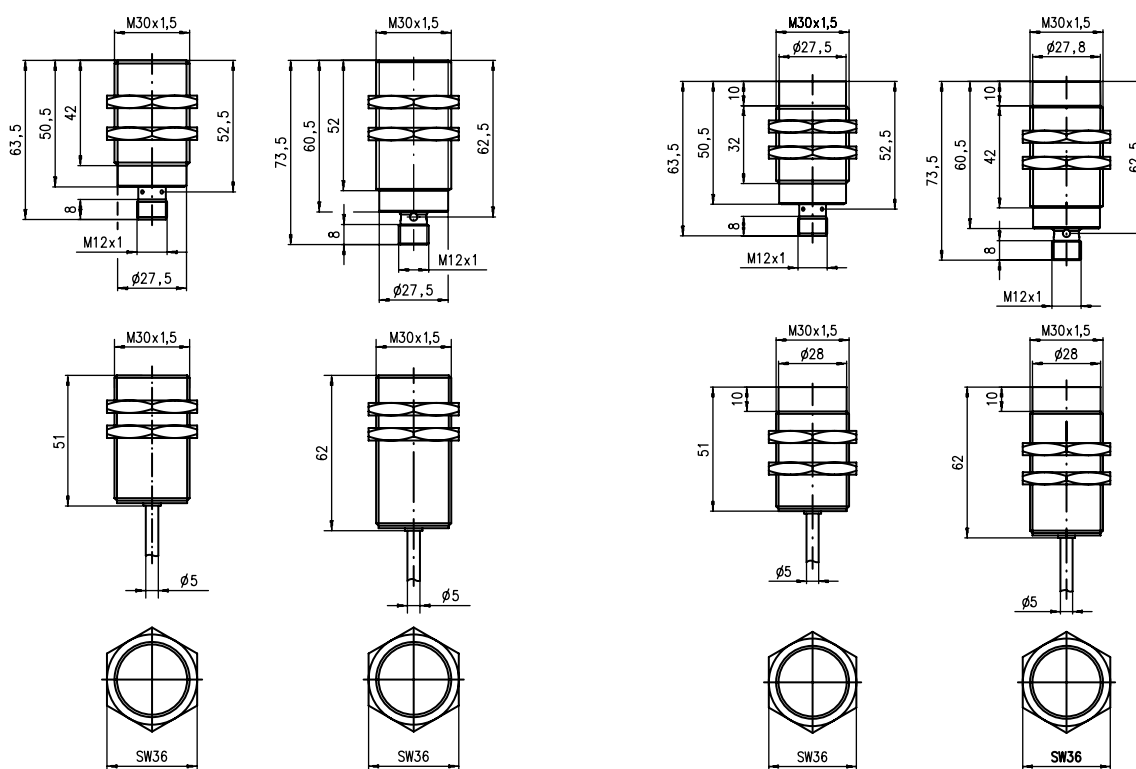
- Sturdy all-metal housing for high, permanent machine availability
- Housing of stainless steel 316L with degree of protection IP 69K for food & beverage applications as well as V2A housing material with degree of protection IP 68/ IP 69K
- Large ranges on stainless steel objects for reliable detection of machine parts, e. g. on packaging machinery in the foodstuffs sector
- Switching distance independent of object property (reduction factor 1)



Direct access to the online product selector at www.leuze.com/en/is230

Part no.	Part description	Operating range Sa Typ. operating range limit Sn	Switching frequency	Type of installation	Switching output 1	Description	Connection	Material
50111436	IS 230FM/4NO.5F-40N-S12	0 ... 32.4 mm 40 mm	90 Hz	Non-embedded	Transistor, PNP, make-contact (NO)	Reduction factor 1, DC	Connector, M12, 4-pin	Stainless steel
50111435	IS 230FM/4NO.5F-20E-S12	0 ... 16.2 mm 20 mm	100 Hz	Embedded	Transistor, PNP, make-contact (NO)	Reduction factor 1, DC	Connector, M12, 4-pin	Stainless steel
50128161	IS 230FM/4NC.5-10E-S12	0 ... 8.1 mm 10 mm	50 Hz	Embedded	Transistor, PNP, break-contact (NC)	Reduction factor 1, DC	Connector, M12, 4-pin	Stainless steel
50128162	IS 230FM/4NC.5-10E	0 ... 8.1 mm 10 mm	50 Hz	Embedded	Transistor, PNP, break-contact (NC)	Reduction factor 1, DC	Cable, 2,000 mm, 3-wire	Stainless steel
50128163	IS 230FM/4NO.5-10E-S12	0 ... 8.1 mm 10 mm	50 Hz	Embedded	Transistor, PNP, make-contact (NO)	Reduction factor 1, DC	Connector, M12, 4-pin	Stainless steel
50128164	IS 230FM/4NO.5-10E	0 ... 8.1 mm 10 mm	50 Hz	Embedded	Transistor, PNP, make-contact (NO)	Reduction factor 1, DC	Cable, 2,000 mm, 3-wire	Stainless steel
50128165	IS 230FM/2NO.5-10E-S12	0 ... 8.1 mm 10 mm	50 Hz	Embedded	Transistor, NPN, make-contact (NO)	Reduction factor 1, DC	Connector, M12, 4-pin	Stainless steel
50128166	IS 230FM/2NO.5-10E	0 ... 8.1 mm 10 mm	50 Hz	Embedded	Transistor, NPN, make-contact (NO)	Reduction factor 1, DC	Cable, 2,000 mm, 3-wire	Stainless steel

Dimensioned drawings: IS 230



IS 230 ... E ... series

IS 230 ... N ... series

ACCESSORIES: ALL STAINLESS STEEL SENSORS

Connection technology

Connection cables

Part no.	Part description	Connection 1	No. of pins	Cable length	Sheathing material
50104571	K-D M12W-4P-2m-FAB	Connector, M12, angled, female	4-pin	2,000 mm	FAB
50104573	K-D M12W-4P-5m-FAB	Connector, M12, angled, female	4-pin	5,000 mm	FAB
50130690	KD U-M12-4W-V1-050	Connector, M12, angled, female	4-pin	5,000 mm	PVC
50104570	K-D M12A-4P-2m-FAB	Connector, M12, axial, female	4-pin	2,000 mm	FAB
50104572	K-D M12A-4P-5m-FAB	Connector, M12, axial, female	4-pin	5,000 mm	FAB
50130648	KD U-M12-4A-V1-020	Connector, M12, axial, female	4-pin	2,000 mm	PVC
50130652	KD U-M12-4A-V1-050	Connector, M12, axial, female	4-pin	5,000 mm	PVC

Further connection cables can be found on our website

Mounting systems

Mounting brackets

Part no.	Part description	Design	Fastening at device	Fastening at system	Material
50113550	BT D08M.5	Angle, L-shape	Screw type	Through-hole mounting	Stainless steel
50113549	BT D12M.5	Angle, L-shape	Screw type	Through-hole mounting	Stainless steel

Further mounting brackets can be found on our website

SMARTER APPLICATION KNOW-HOW

We are constantly working on challenges and important issues in our target markets.



Safety at work



Ex-protection



IO-Link



Laser class 1



ID technologies



Connectivity



Find out more in our user knowledge and topic center: www.leuze.com/en/topics