

## Hyperion 924IPSv2 Short-Range Pulsed DC Ionising Bar



### Product Code: 924IPSv2

Powered by 24V DC the Hyperion 924IPSv2 is the most compact pulsed DC bar available on the market.

The 924IPSv2 features Meech's Ion Current Monitoring (ICM) technology, this ensures performance is maintained with local and remote alerts when the bar needs cleaning.

Fully BarMaster and SmartControl compatible, the output voltage, frequency and balance can be adjusted. These features will help optimise the 924IPSv2 for specific applications.

# Product Data Sheet

Published Date: 18.02.2025



## Features & Benefits

<b>Optimum Working Distance</b>	20-150mm; suitable for short range applications, such as web paths on converting machinery, printing presses or applications that have traditionally used AC equipment.
<b>Compact Size &amp; Full Length Ionisation</b>	At just 22.1mm (W) x 31.2mm (H), it will fit into tight installations. The bar is also designed to give full performance over its entire length.
<b>Low Voltage Wiring</b>	Requiring a 24V DC supply removes the need for high voltage wiring to the ionising bar.
<b>Integrated Power Supply (IPS)</b>	The integral pulsed DC power supply uses surface-mount high voltage components. This reduces the overall size of the bar, making it the most compact 24V DC bar available.
<b>Adjustable Output</b>	Output voltage, frequency and balance can be adjusted using the BarMaster programmer. Adjustable output optimises the bar for sensitive applications like RFID.
<b>Adjustable Clean Pin Alert</b>	Meech Ion Current Monitoring (ICM) technology detects when the 924IPSV2 needs to be cleaned. The LED on the bar alerts operators of the need for cleaning. This ensures peak performance is maintained.
<b>Environmental Protection</b>	IP66 construction makes the bar suitable for harsh environments.
<b>Dual Alarm Lines - Clean Pin Alert &amp; Fault Output</b>	An output signal will activate when the bar needs cleaning or a fault has been detected. The flexible configuration of the alarm lines allow them to be interfaced with PLC's, buzzers and remote lamps. This will alert operators remotely to check the bar.

# Product Data Sheet

Published Date: 18.02.2025

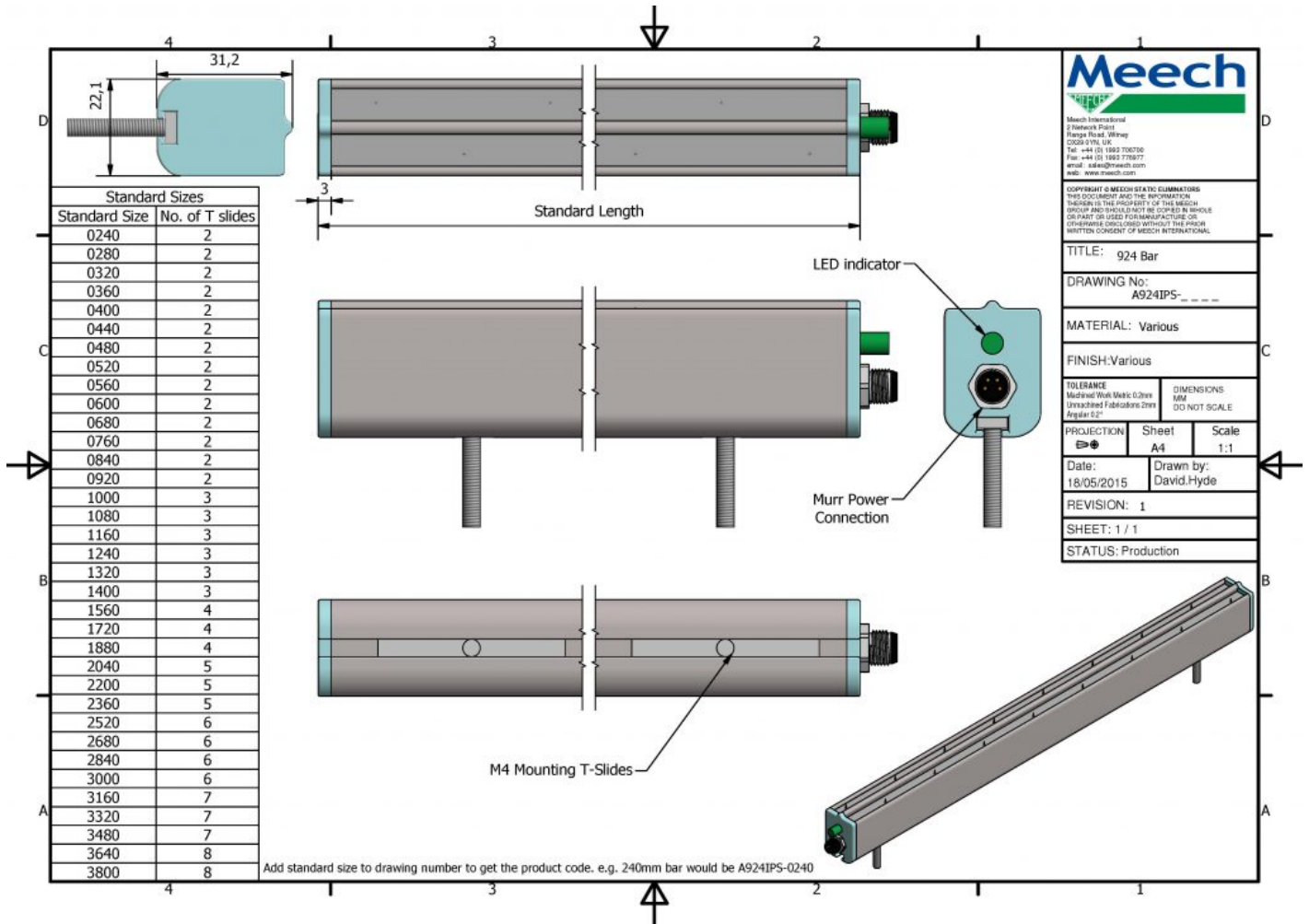


## Technical Characteristics

Dimensions (W x H)	22.1mm x 31.2mm
Maximum Length	3960mm
Weight	0.5kg/metre
Construction	FR ABS
Mounting	'T' Slot with M4 x 20mm studs
Emitters	Sharp titanium pins
Input Voltage and Current	24V DC (21-27V DC) Max 500mA
Output Voltage	Adjustable, up to +/- 7kV pulsed DC
Electrical Connection	4 Pole M8
Output Frequency	Default: 20Hz (Adjustable with BarMaster)
Output Balance	Default: 54% Positive, 46% Negative (Adjustable with BarMaster)
Environmental Protection	IP66
Max Ambient Temperature	60°C
Certifications	CE, UL.

# Product Data Sheet

Published Date: 18.02.2025



PDFcopy

Meech International

UK: +44 1993 706 700  
Hungary: +36 27 535 075

US: +1 330 564 2000  
China: +86 400 820 0102

Belgium: +32 8067 0204  
India: +91 (0)7030938211

Singapore: +65 65918859

email: sales@meech.com  
web: www.meech.com

© Meech Static Eliminators Ltd 2025