



# IonWash™

## 3D Component Cleaner

Sales Sheet  
IonWash/01/EN/-02/18

The IonWash component cleaning system from Meech is designed for the fast and consistent removal of dry unbonded contamination from 3D components.

IonWash is developed as an automated cleaning cycle system, designed to provide high quality cleaning performance, consistently and reliably.

The system incorporates powerful ionisation, as well as blowing and vacuuming airflows. The multi directional IonWash nozzles are a critical feature of IonWash. These can be located and positioned within the cleaning area to direct the high-volume ionised airflow exactly where it is required to clean the 3D component.

Contamination is removed and filtered within an enclosed re-circulatory system to prevent the risk of recontamination. Safety and operator controls mean the IonWash is safe to use and system

controls provide alerts on the status of the system and a range of settings to optimise the system such as cycle time, air pressure and ionisation.

Customers who have purchased IonWash have reported payback periods of less than 4 months. IonWash can make a significant impact to industry applications requiring high quality, consistent cleaning performance.

### IonWash at a glance:

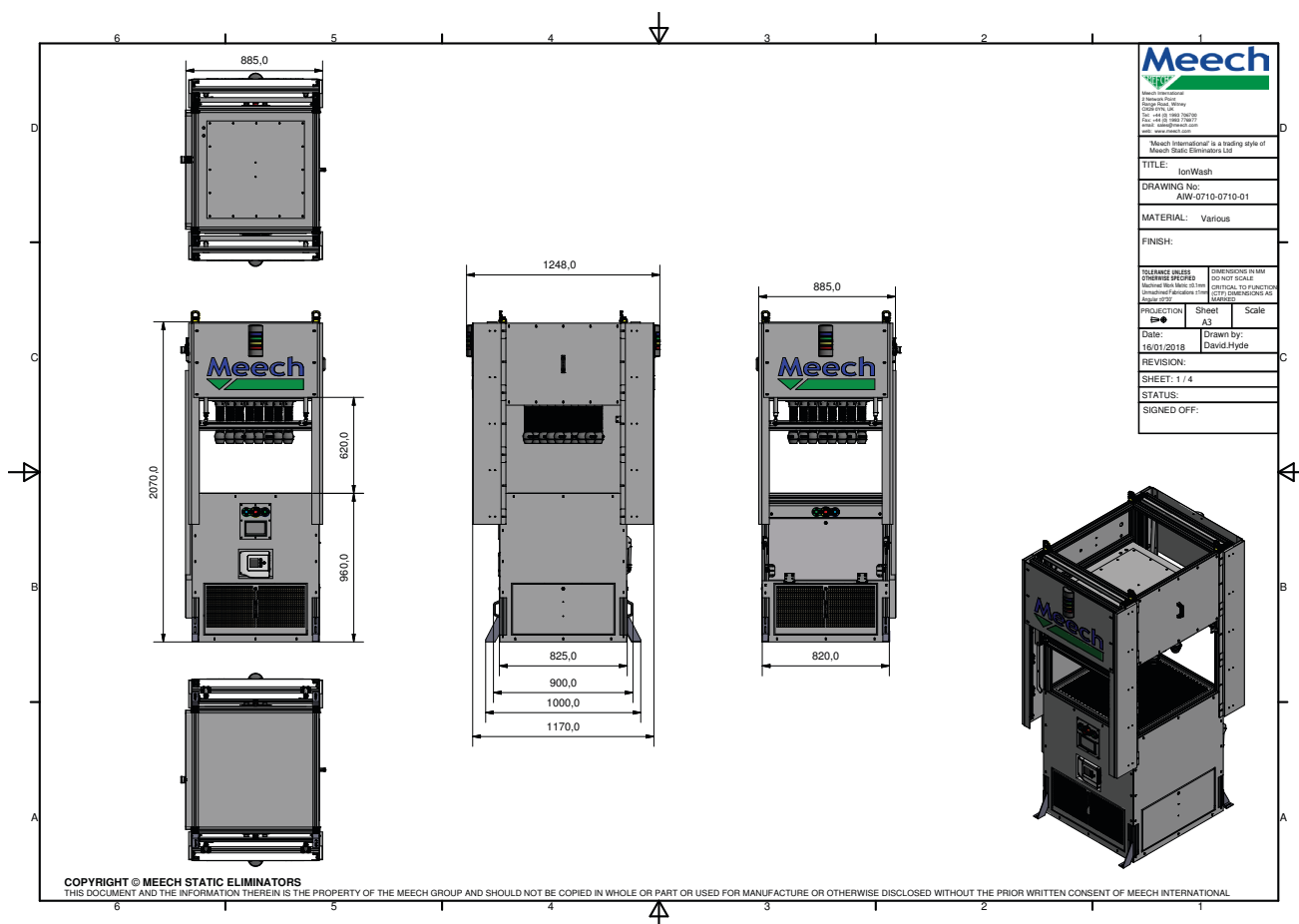
Feature	Benefit
Ionisation	Ionised blown airflow to remove static charge and contamination
High volume blown airflow	Contamination removal without the need for compressed air
Enclosed Cleaning Chamber	Removes manual handling and prevents recontamination
16 multi-directional nozzles	Optimal and consistent airflow directed at component
Two Stage Filtration	Containment of contamination with bag filter and HEPA/ULPA

## Technical Characteristics

Power output	6.6kW
Power consumption	4.7KvA (Average for 25 second cycle)
Power supply	200 - 400V; 3 Phase; 50/60Hz
Dimensions (mm)	883 x 1248 x 2070-2200 (W x D x H)
Usable cleaning area dimensions (mm)	710 x 710 x 330 (W x D x H)
Weight	540kg
Air volume output capacity	2200m <sup>3</sup> /hr
Static charge decay time (500V - 5000V)	0.6 seconds at 280mm and 1Kpa pressure setting
Ionisation: Output Voltage	Up to 12kV
Ionisation: Ion Balance	+/- 10V
Filtration	HT failure 24V signal
Noise level	71 dBa
Touch screen controls	Positive Pressure setting; Cycle Time; Start; Local/ Remote mode; Data Log
Physical controls	Start; Emergency Stop; Reset; One/Two Operator mode switch, Door Speed Control Valves

## Industries/Applications

- Automotive**  
 Vehicle lighting units and internal components e.g. speedometer covers etc.
- Medical**  
 Medical devices and optics
- Electronics**  
 Static sensitive assemblies, Clean room assemblies/Phone LCD screens, camera lens assemblies and robotics
- Aerospace**  
 Optical displays, aircraft systems and Avionics such as flight deck controls



Product shown in this document may be covered by one or more patents, patents applied for and/or registered designs and/or trade marks. For further information please refer to our Head Office or visit [www.meech.com](http://www.meech.com).